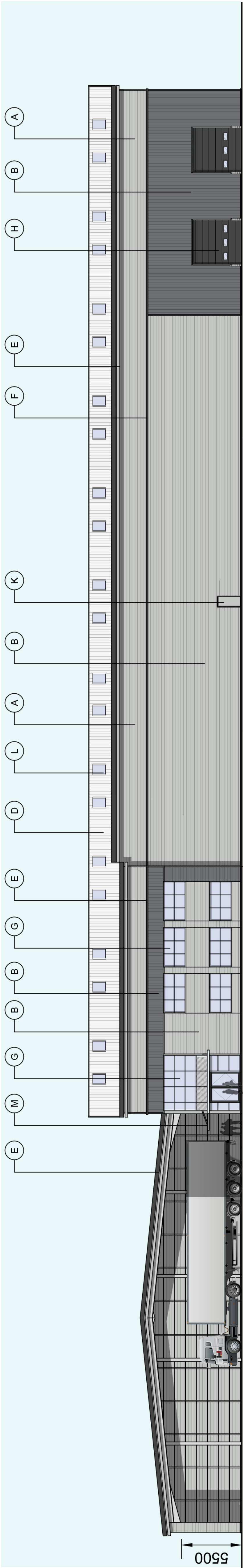
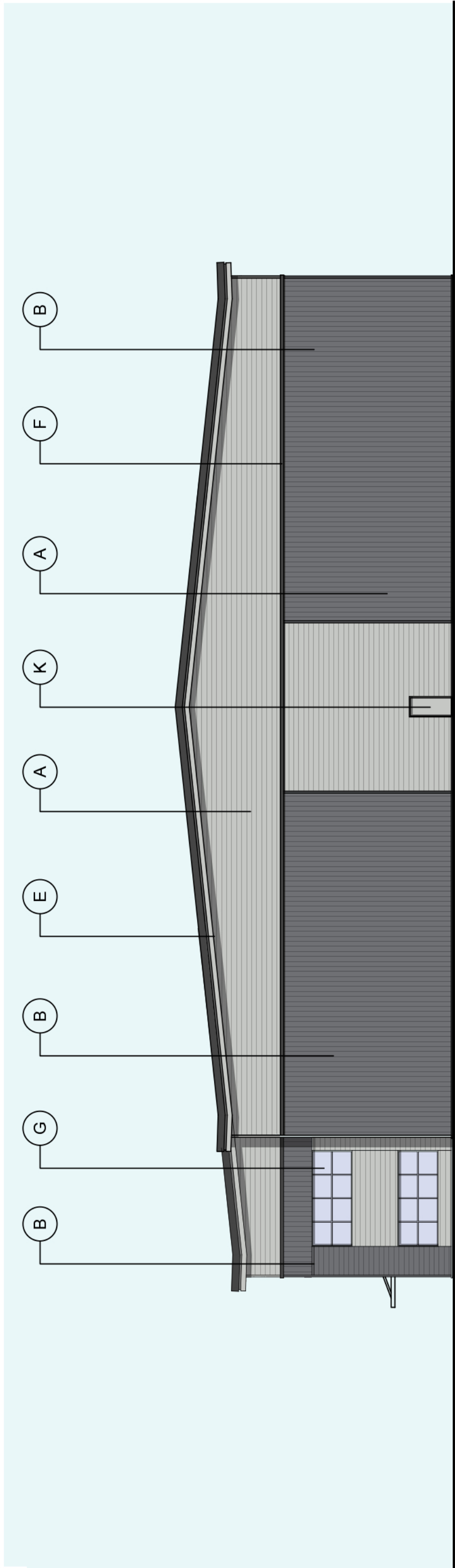


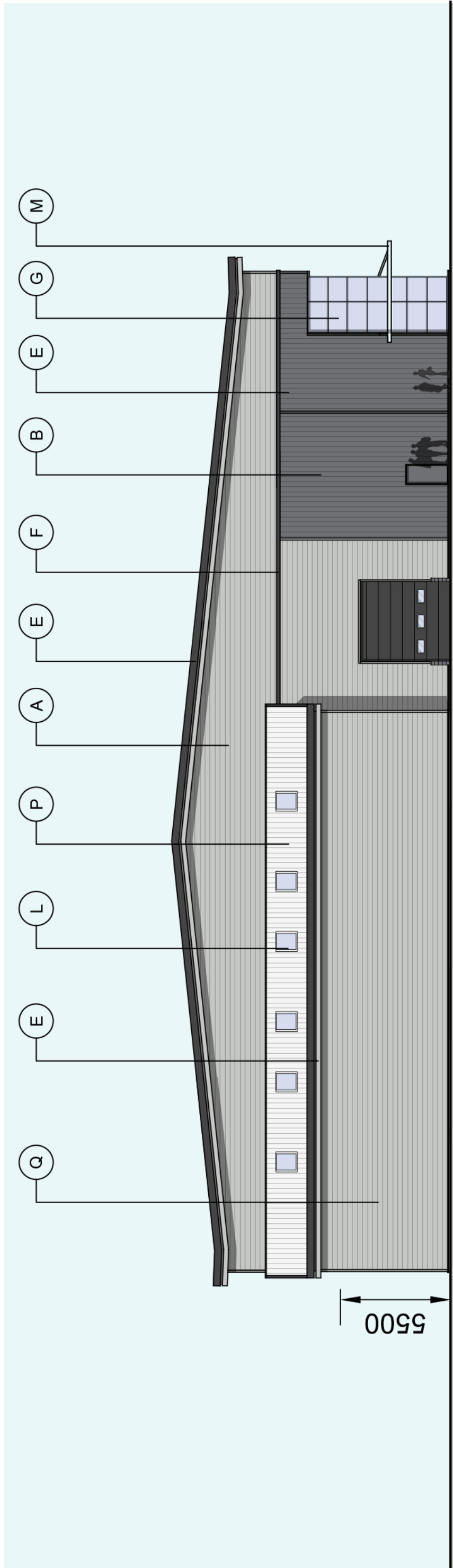
North Elevation Scale 1:200



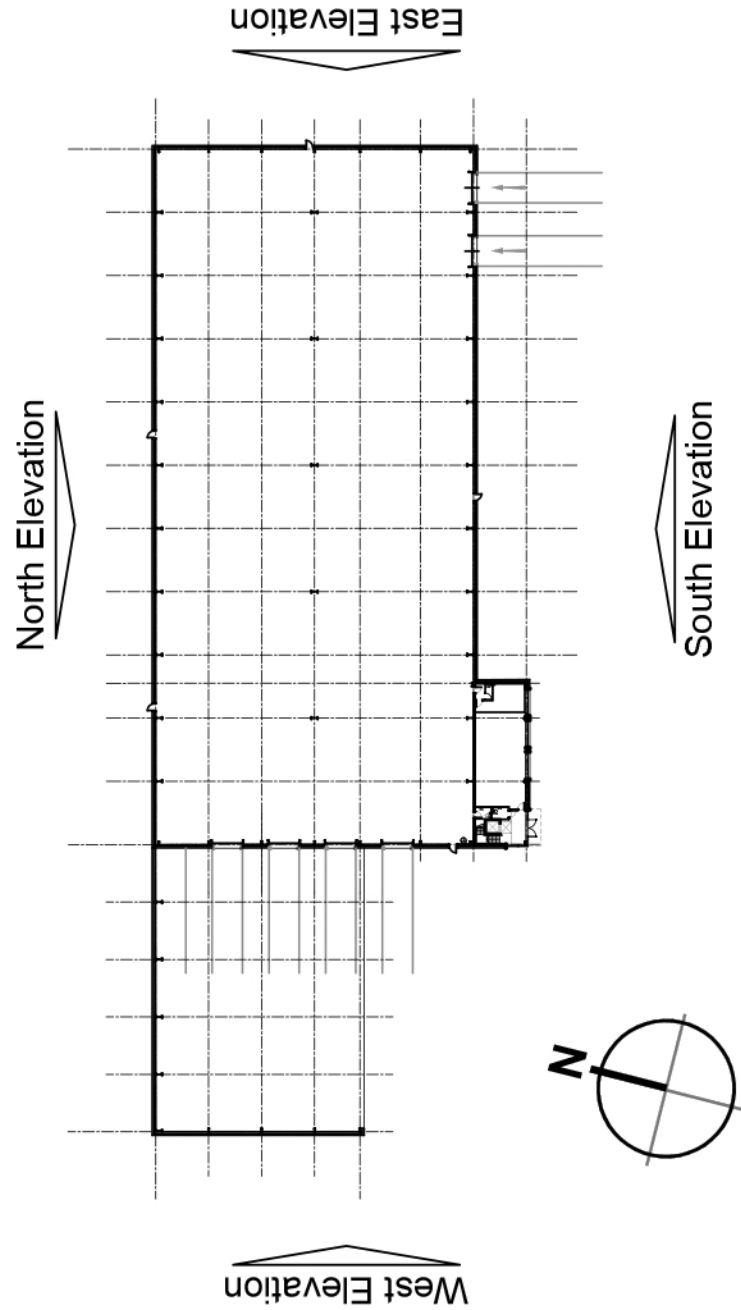
South Elevation Scale 1:200



East Elevation Scale 1:200



West Elevation Scale 1:200



Location Plan Scale 1:1000

- A** Horizontally laid trapezoidal profiled wall cladding to achieve a minimum performance 'U' value as stated in Part L model & 25 years system guarantee. Finish: Polycarbonate PVF. Colour: Oyster Grey (RAL 7035)
- B** Vertically laid trapezoidal profiled wall cladding to achieve a minimum performance 'U' value as stated in Part L model & 25 years system guarantee. Colour: Slate Grey (RAL 7012)
- C** 1000mm flat panel cladding system (around docks) Colour: Slate Grey (RAL 7012)
- D** Roof trapezoidal profiled cladding to achieve a minimum performance 'U' value as stated in Part L model & 25 years system guarantee. Colour: Goosewing Grey (RAL 7038)
- E** 2 Piece Eaves flashing Finish: Polyester Powder Coated Top Colour: Anthracite (RAL 7016) Bottom Colour: Oyster Grey (RAL 7035)
- F** High Level horizontal feature flashing Finish: Polyester Powder Coated Colour: Anthracite Grey (RAL 7016)
- G** Thermally broken polyester powder coated aluminum curtain wall system - mullion drained Glazing: Grey tinted Frame Colour: Anthracite (RAL 7016)
- H** Sectional vertical lift standard HGV dock leveller Finish: Polycarbonate PVF Colour: Oyster Grey (RAL 7035)
- J** Sectional vertical lift level access loading door Finish: Polycarbonate PVF Colour: Anthracite (RAL 7016)
- K** Steel insulated security door and frame Finish: Polyester Powder Coated Frame Colour: to match adjacent cladding
- L** Rooflights Triple skin rooflights to 10% of roof area.
- M** Canopy Glass canopy above office entrance area
- N** Louvre Acoustic Louvre to provide 25.5m² ventilated area. Finish: Polycarbonate PVF Colour: Oyster Grey (RAL 7035)
- P** Roof trapezoidal profiled cladding - 25 years system guarantee. Finish: Polycarbonate PVF Colour: Goosewing Grey (RAL 7038)
- Q** Horizontally laid trapezoidal profiled wall cladding - 25 years system guarantee. Colour: Oyster Grey (RAL 7035)



P2	Added canopy to service yard.	GT	GDM	30/10/15
rev	amendments	by	cid	date

## Alpha Park, Chandlers Ford Unit 2 - Proposed Elevations



Newport Business Development Centre, Colchester Way, Newmarket, Suffolk IP11 2TN  
t +44 (0)1556 653027 e info@umcarchitects.com

Drawing Status:	Planning
Drawn:	GDM/GMC
Date:	07/08/2015
Scale:	1:200, 1:1000 A1
Drawing no:	13123 P110
Revision:	P2